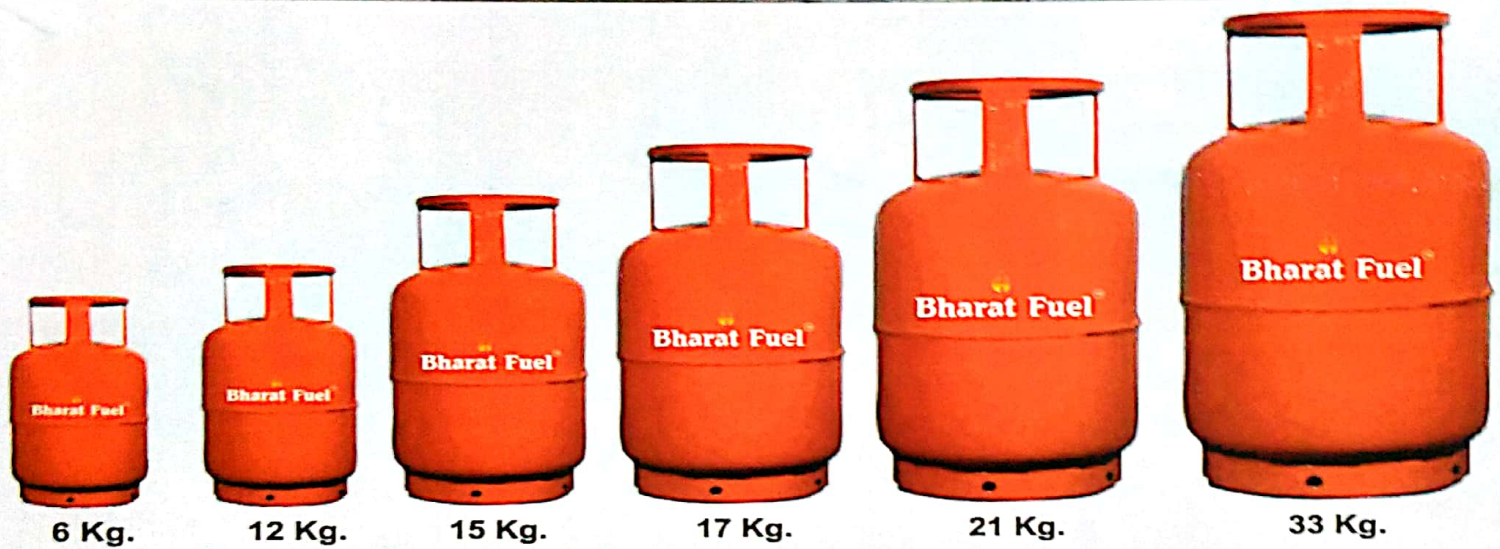


Bharat FuelTM

Pack Cylinder / Auto LPG Pump



Bharat FuelTM

Pack Cylinder / Auto LPG Pump

Our Vision

Our vision is to become a key player in Bulk LPG (Packed Cylinder and ALDS) market in India through a chain of TPPL Blending plant Franchisee's at strategic locations across the country. We intend to bring value and cost benefit to our customers through blending propane and butane in the right mix to deliver a quality product to the end users. Our vision is to be among the top players in our business by delivering superior customer service with a focus on quality, safety and environmental standards.

What is LPG, LPG blending and bottling plant?

LPG is extracted from heated crude oil using distillation tower. This LPG can be used as it is or separated into TPPL products in three primary parts viz, propane, butane and isobutene. LPG is store pressurised as a liquid in either cylinders or tanks which are known as Bullet because of its shape.

However, LPG can also be produced by blending propane and butane in a TPPL blending plant which is often cost effective. Bharat Fuel is in the process of creating a chain of Franchisee's across the country for Bharat Fuel blending at strategic locations thus giving it a price advantage over existing TPPL marketing players.

Project in Pipeline:



We are currently working on three new bottling & blending facilities on various location of north India to capture the market potential, first in Firozabad (Uttar Pradesh), second at Varanasi (Eastern Uttar Pradesh) and third in Bhilwara (Rajasthan). It is estimated that these unit will be in production till starting of 2024. After completion of this project we will become the first private player in northern India which has largest storage and bottling facilities in northern, west & north east India.

Domestic Bharat Fuel:



Bharat Fuel is very friendly to be housewivis if used in the stage and specified manner. Bharat Fuel installation for a household consists of ISI approved Gas Stove, Regulator and Suraksha hose, Bharat Fuel offers immediate and hassle free gas connection right at your door step. At the comfort of your home or office, you can avail a new domestic gas connection with minimum documentation. We welcome you to experience the world-class services of Bharat Fuel. WE provide various size of cylinder as per needs of consumer for domestic use, usually we provide a wide range of 6Kg, 12 Kg & 15 Kg cylinder for domestic user.

Commercial Bharat Fuel:



We specialize installing TPPL equipment and supplying LPG to a variety of commercial customers including hotels, restaurants, agriculture, cutting, welding, caterers, resorts, sweets shop and other institution such as Hospital and Hotel Businesses choose Bharat Fuel because of its product quality and service. We provide various size of cylinders as per needs of consumer for commercial use, usually we had a wide range of 17kg, 21Kg & 33kg cylinder for commercial user.

Bharat FuelTM

Pack Cylinder / Auto LPG Pump

Industrial Bharat Fuel:



We have both VOT/LOT for industrial purposes. Liquid Off-take (LOT) TPPL systems have become popular in commercial & Industrial usage of TPPL. The system offers Strength of Bulk TPPL Installation and easy functionality as that of Cylinder manifold. LOT LPS System withdraws liquid TPPC using the LOT valves. The LOT System can cater to volumes upto 250kg per Hour also occupies less space. They are easy to handle & provide with High Safety standards (LOTs fixed with SRV/EFCV within the Cylinders) the LOT LPS system are highly cost effective as there is no residual loss. We provide easy availability wide range of 33Kg & 47Kg cylinder for Industrial Use.

About Bharat Fuel

Bharat Fuel brand is owned by Trinetra Petroleum Private Limited. The promoters are having an industry experience of 10 years. Bharat fuel focuses on creating a chain of TPPL blending Plant. Franchisees at straight location across the country to marketing Bulk TPPL to existing player in the field of parallel TPPL marketing and Auto TPPL sales.

The company has a straight tie up with BHARAT FUEL AUTOGAS Packed cylinder to appoint Auto TPPL dispensing stations in the country, State & District which is in high demand due to the long term nature of the business and also since TPPL is an essential commodity.

Individuals

- ✍ May be of any gender, caste or creed and citizen of India
- ✍ Aged between 21 to 65 years
- ✍ Passed Minimum 10th from and Board/School
- ✍ Should have good social conduct and sound mental health

Partnership

- ✍ Each partner should individually meet the eligibility criteria expect for land & finance.

Non-individual entities

- ✍ The entity should be registered in India.
- ✍ Entity will have to furnish appropriate Board Resolution / Power of Attorney to show that person making the application on its behalf is empowered to make the same.
- ✍ The applicant should be financially sound to make the initial investment to the tune of Rs. 1 Core and organize working capital.
- ✍ The applicant should have land by means of ownership (whether with title deed or lease holder) or having the offer from the landowner (s) lease the land directly to the individual.

Bharat FuelTM

Pack Cylinder / Auto LPG Pump

Following aspects need to be considered while handling LPG :- $\frac{3}{4}$

Leakage particularly of liquid would result in release of large volumes of flammable gas.

$\frac{3}{4}$ A very small proportion of these gases in air can give rise to an explosive mixture.

$\frac{3}{4}$ LPG vapour is heavier than air and would flow along the ground or through drains and may be ignited at a considerable distance from the source of leakage. LPG liquid by its rapid vaporisation and consequent lowering of the temperature, can cause severe frost burns if it comes in contact with the skin

Auto LPG

Filling Point : The point of inlet pipe connection of a bulk storage tank for MS/ HSD/ LPG, where hose is connected for filling the products into the tank.

Filling Point : The point of inlet pipe connection of a bulk storage tank for MS/ HSD/ LPG, where hose is connected for filling the products into the tank

Retail Outlet/ MS/ HSD Service Station : The segregated area provided with facilities and specially prepared, for storage and delivering MS/ HSD to the fuel tanks of motor vehicles

Tank Truck Unloading Facilitie

Tank truck shall be unloaded using hose with isolation arrangement on both ends so that no release of liquid LPG take place at the end of the unloading

The hose - coupling / flange joint shall be of 300 lb rating with metallic gasket

The LPG hose used shall conform to OISD-STD

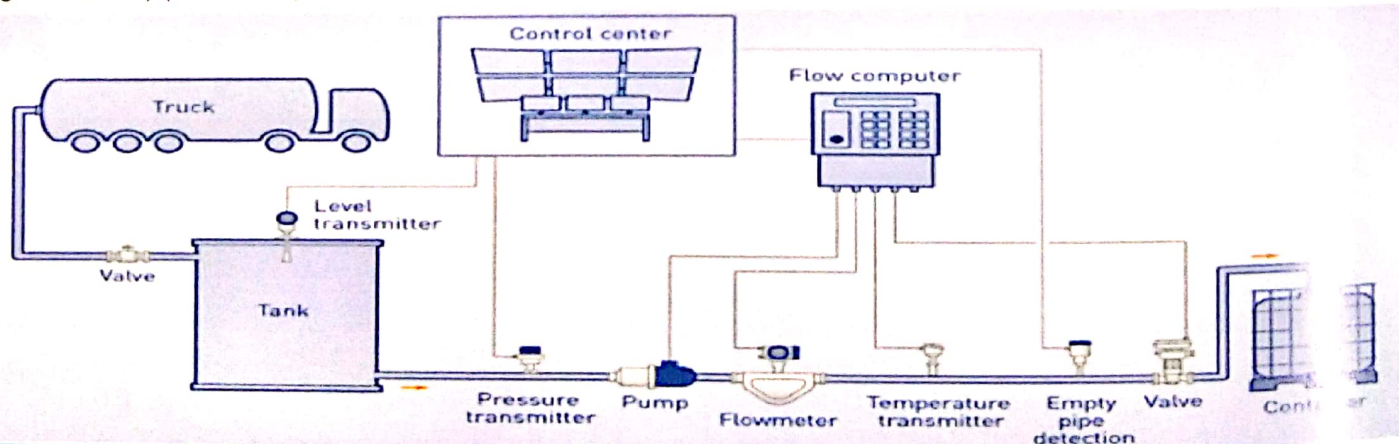
Hose length shall not be more than 5.5 m

The pipeline and the hose shall be laid so as to be above the ground to prevent any damage

The fill point shall be provided with non return valve and quick shut off isolation valve

Proper arrangement for earthing & bonding shall be made

The vent pipe, if required , shall be at height of at least 3 m from the grade and 6 m away from potential sources of ignition / likely places of vapour accumulation



Piping: Need to Check

Piping shall be protected against physical damage, collision & corrosion

Pipe length shall be short & diameter shall be kept as small as practicable

Entire piping system including the appurtenances shall where ever possible be constructed with welded joints and where necessary with flanged joints

Bharat FuelTM

Pack Cylinder / Auto LPG Pump

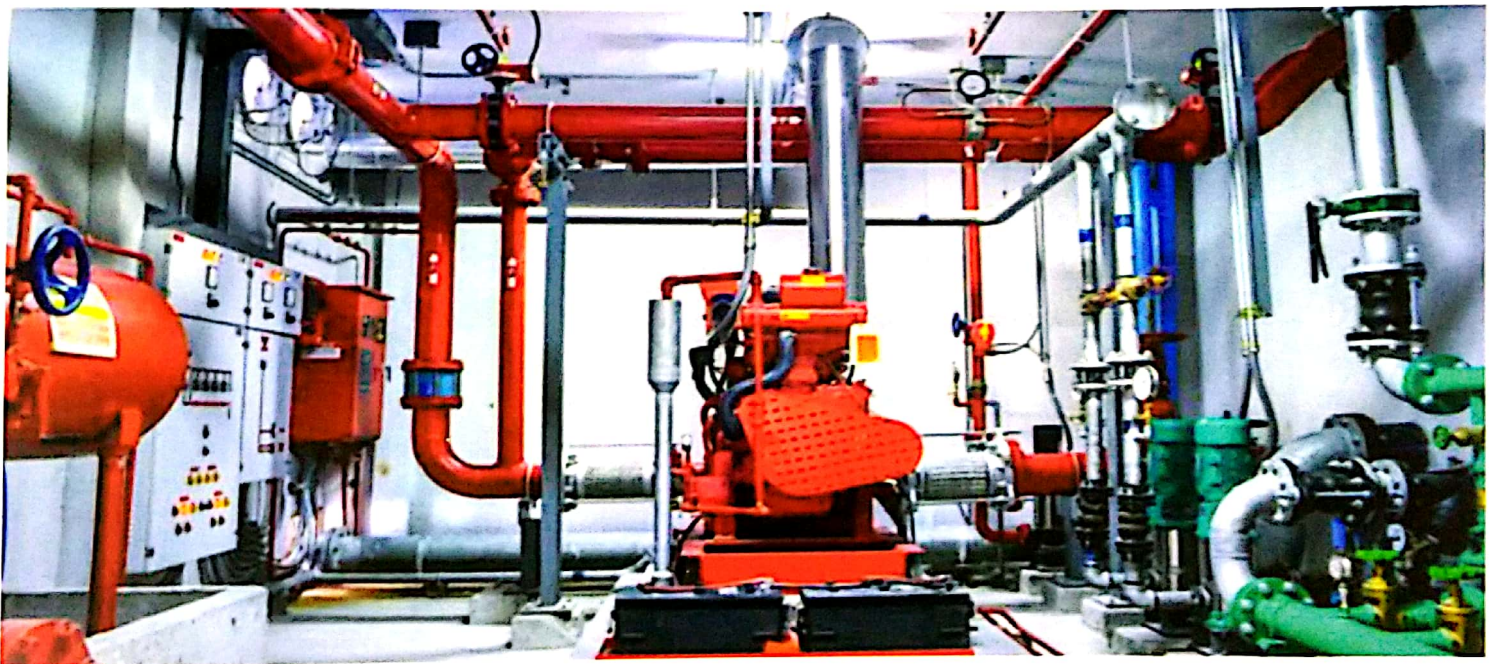
Piping shall be run as directly as practical from one point to another and with as few restrictions such as elbows and bends as conditions will permit. Provision shall be made in the piping including connection to the bulk storage vessel to compensate for expansion, contraction, jarring, and vibration,
Where ever threaded joints are used , a seal weld shall be provided

Fire Fighting Facilities

At ALDS having only underground or mounded LPG storage vessels, two numbers of 70 kg dry chemical type fire extinguishers shall be provided

At ALDS having above ground LPG storage vessels, hydrants with minimum water pressure of 7 kg/cm² shall be provided at convenient positions for all round coverage of storage vessels and handling area, and water sprinklers with spray density of 10 lpm / m² shall be provided

The minimum fire water storage at the premises shall be that needed for fighting fire at least for one hour



OPERATING PROCEDURE

During unloading of the product from the tank truck to the bulk storage vessels the tank truck shall be parked in the space marked for the purpose

During the period of unloading of fuel from tank truck to the storage vessels, operation of dispensing fuel to motor vehicles shall be suspended

During the period of unloading of LPG from tank truck to bulk storage vessel and also while evacuating the storage vessel for maintenance, testing etc., all dispensing, maintenance operations etc. at ALDS including that for MS/ HSD shall be suspended

LPG shall be dispensed only into the fuel tank container of a motor vehicle duly approved by the CCE

LPG shall not be filled in the fuel tank of motor vehicle while the engine of the vehicle is running

Bharat FuelTM

Pack Cylinder / Auto LPG Pump

Receipt of Bulk LPG at ALDS

- Bulk LPG at ALDS shall be unloaded preferably in non-peak hours
- Unloading of bulk T/T shall be carried out only at location as approved by CCE
- The unloading of LPG shall be done in presence of the authorised person at ALDS & TT Crew
- Fire extinguishers to be positioned as an immediate aid to extinguish any fire except that of Liquid LPG
- Storage tank pressure, temperature and level shall be recorded
- Tank Truck shall be placed in drive out position
- After placement, engine master control switch shall be switched off, if applicable
- Minimum two wooden chokes shall be placed under wheels
- Chassis and LPG vessels are to be earthed independently for which bare metal cleats shall be provided



Land & Lease Requirements

- ✗ The offered land should be situated on the main road frequented by Auto Rickshaws and Cars running on Auto LPG.
- ✗ Minimum Area requirement : 625 sq meter with Frontage of 25 Meter.
- ✗ In case a plot of smaller dimension meets the statutory norms and IPPL requirements, the same can be considered on a case-to-case basis.
- ✗ Plot situated on National Highway should comply with MoRTH norms. Consideration of plots on NH will be subject to leaving applicable ROW (Right of Way) as per the norms.
- ✗ Plot should be abutting to the road, and there should be no Overhead High Tension (> 11KVA) Line on the land.
- ✗ The land should be non-Agriculture, designated as a Commercial or Industrial Plot. It should have a clear legal title, free from any encumbrances and encroachments.
- ✗ Any fees associated with NA (Non-Agricultural)/NOC (No Objection Certificate)/Zoning regulations, etc., required for setting up an Auto LPG Station, shall borne by the applicant.

Bharat FuelTM

Pack Cylinder / Auto LPG Pump

Storage of Bulk LPG:

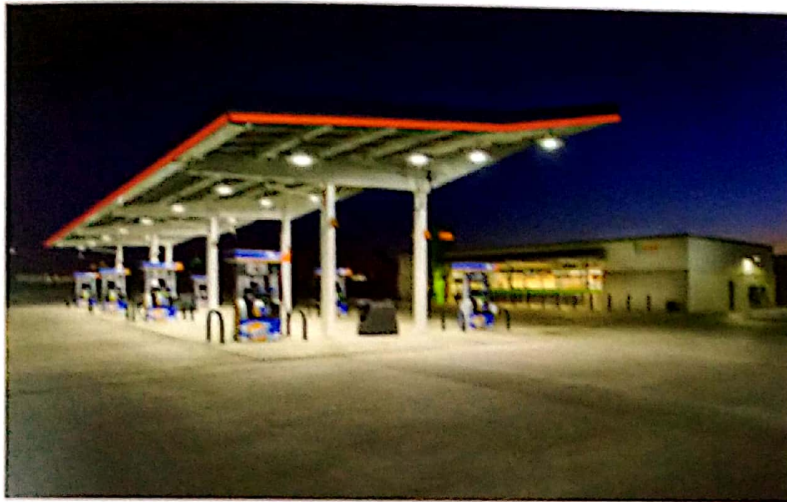
Guide the vehicle to the position at the designated area of the ALDS facing the direction of exit

Do not leave the vehicle unattended during refueling operation

Ensure that sources of ignition, such as pilot lights, electrical ignition devices, electrical appliances/ gadgets, and engines located on the vehicle being refueled are turned off before dispensing of LPG to a vehicle

Check for stamping of Road Transport Authority in the Registration Certificate of vehicle prior to refueling

The operator at ALDS shall satisfy himself before commencement of filling in the vehicle in respect of following :



TRAINING FOR ALDS

Fire fighting facilities, its upkeep and operation
Evacuation and safe egress of the vehicles in an emergency

Housekeeping

Safety in transportation of LPG

First aid

Emergency plan./drills



to LPG

Auto LPG Dispensing Station : The premises used for storing and dispensing auto LPG to the motor vehicles for motive purpose

Capacity : The maximum volume of water that can be stored in a vessel/container at 15 °C at atmospheric pressure

Competent Person : A person recognised by the concerned Statutory Authority for the purpose in respect of which the competency is required

Dispenser : The equipment provided in the ALDS for delivering LPG to the Auto LPG Tank of motor vehicles

Emergency shut off Valve : A shut off valve which, in an emergency, operates automatically or can be operated remotely

Bharat FuelTM

Pack Cylinder / Auto LPG Pump

Why Bharat Fuel Gas?

Ten main reason to choose BHARAT FUEL for TPPL requirement are:

- > 24 hour delivery at doorstep.
- > Zero waiting for booking
- > Assurance of best quality and quantity
- > Extended easy distribution system
- Quick Installation
- > 24 X 7 customer supports.
- > 24 X 7 Emergency Service.
- > Safety is our Priority
- > Variety of Module
- Easy and hassle free maintenance service

Trinetra Petroleum Pvt Ltd.

Corporate Office Kolkata:

Trinetra Petroleum Pvt Ltd (Bharat Fuel)
209 AJC Bose Road, Karnani Estate,
4th Floor, Room No.-151
Kolkata-700017, West Bengal

State Office Odisha

Esplanade 3rd Floor, Room No.304
Rasulgarh, Bhubaneswar, Odisha-751010

State Office UP

Trinetra Petroleum Pvt Ltd (Bharat Fuel)
C-69, Shikva Tower, Vibhuti Khand, Gomtinagar
Lucknow-226010(Uttar Pradesh)



TOLL FREE
8929858040

Bangalore

27, Tulshi House, Diagonally opp to H.P Petrol Bunk,
Nandhini Layout, Bangalore-560096

Chennai office

Trinetra Petroleum Pvt. Ltd. (Bharat Fuel)
No. 33, Jawaharlal Nehru Salai, Ekkattuthangal,
Chennai-600032, Landmark- Ambala Nagar Bus Stop
Near Sangeetha Mobiles

Hydrabad office

Trinetra Petroleum Pvt. Ltd. (Bharat Fuel)
Prajay Corporate House Unit No/Room No-301
Chikoti Garden Begumpet Near Prakas Nagar Metro Station
Hydrabad-500016

Bottling Plant Address

1. Plot No.: 556, Village - Badbramhanmara, P.O: Baripada, Tehsil: Baripada Sadar, Dist: Mayurbhanj, Odisha
2. Khaitian No-0034, Ghat No-111,112,113,114,115 & 116, Village : Inguri, Tehsil : Bhartana, Dist- : Itawa, State : UP, Pin-206001
3. Hussainapuram Village, Papuly Mandal, Dhone Taluk, Kurnool, Dist- A.P.
4. Plot No- SY.No.20/1, Taluk - Shiddlagatta, Village / Town, Devaganahalli Jangamakote, Dist: Chikkaballapura State: Karnataka
5. LPG, Bottling Plant, V. No.54 Alliyor Village, Madama Road, Chetpet Taluka, Thiruvannamalai, District-604502

E-mail : info@trinetrapietroleum.com, trinetrapietroleumlpg@gmail.com / bharatfuel@trinetrapietroleum.com

Website : www.trinetrapietroleum.com, www.bharatfuel.co.in

